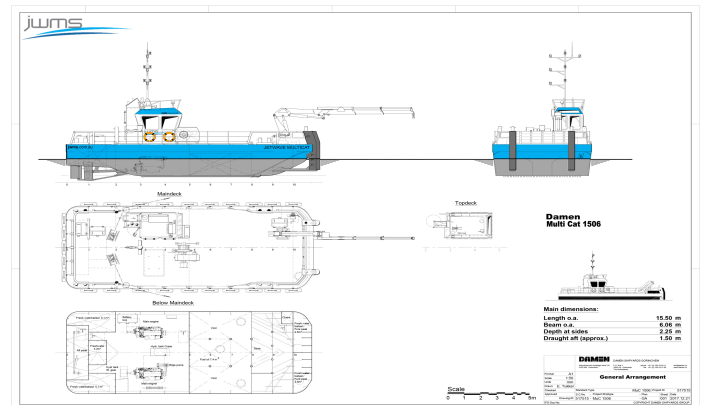


Jetwave Marine Services Pty Ltd

JETWAVE 1506

Damen Multi-Cat 1506



BUILT		HULL	
YARD NUMBER	517514-15-16	STEEL	
DATE	LAUNCHED NOV 2011	UTILITY	ANCHOR HANDLING VESSEL
		BOLLARD PULL	7.4 TONNE
CLASSIFICATION			
CLASS	BUREAU VERITAS + MACH	BRIDGE	
FUNCTION	TOWING, PUSHING	RADIO	ICOM VHF & HF
		RADAR	FURUNO FR-8062
		ECHO	FURUNO FE 700
		VHF / RADIO TELEPHONE	SAILOR 6248
DIMENSIONS		ACCOMMODATION	
OVERALL LENGTH	15.5m	BERTHS	NIL
BEAM	6.06m		
DESIGN DRAFTS	1.50m FULLY LOADED		
MACHINERY		PUMPS	
MAIN ENGINES	2 X VOLVO D9 MH/1	BILGE & BALLA	15M3 @ 28M HEAD
GENERATORS	1 X 442 kW	GS & FIRE PUMP	15M3 @ 28M HEAD
GEARBOX	2 X TWIN DISC MG 5091		
PROPULSION	2 X BRONZE FIXED PITCH		
FUEL CONSUMPTION		DECK EQUIPMENT	
FULL OPERATING	10 KNOTS @ 80LTRS	ANCHOR	75 KG POOL
		PUSH BOW - CYLINDRICAL RUBBER FENDER	
TANK CAPACITIES		SCRAMBLE NET	MOB JASON CRADLE
FUEL OIL	7.4 M3	DECK CRANE HEILA	2.2 TON @ 8.6 M
FRESH WATER	3.2 M3	COUPLING WINCHES	2 X 25MT HOLDING
BALLAST	15.4 M3	BARGE HANDLING FENDERING	
		TOWING HOOK	DISC TYPE 15 TON