

# Jetwave Marine Services Pty Ltd

## JETWAVE WARRIOR

Shallow Water Draft

Inshore Utility Vessel



<b>BUILT:</b>		<b>HULL:</b>	
BUILDER, LOCATION	ALICRAFT, HENDERSON	ALUMINIUM CATAMARAN	JET VESSEL
DATE	LAUNCHED 1996		

<b>CLASSIFICATION:</b>		<b>BRIDGE:</b>	
M&H	4570	RADIO	ICOM VHF & HF
USL	2C (3 + 4)	RADAR	NIL
		ECHO	RAYMARINE
		GPS	RAYMARINE

<b>DIMENSIONS:</b>		<b>ACCOMMODATION</b>	
LENGTH OVERALL	14.9 M	TOTAL BERTHS	NIL
BEAM			
DESIGN DRAFT	0.5 M FULLY LOADED		

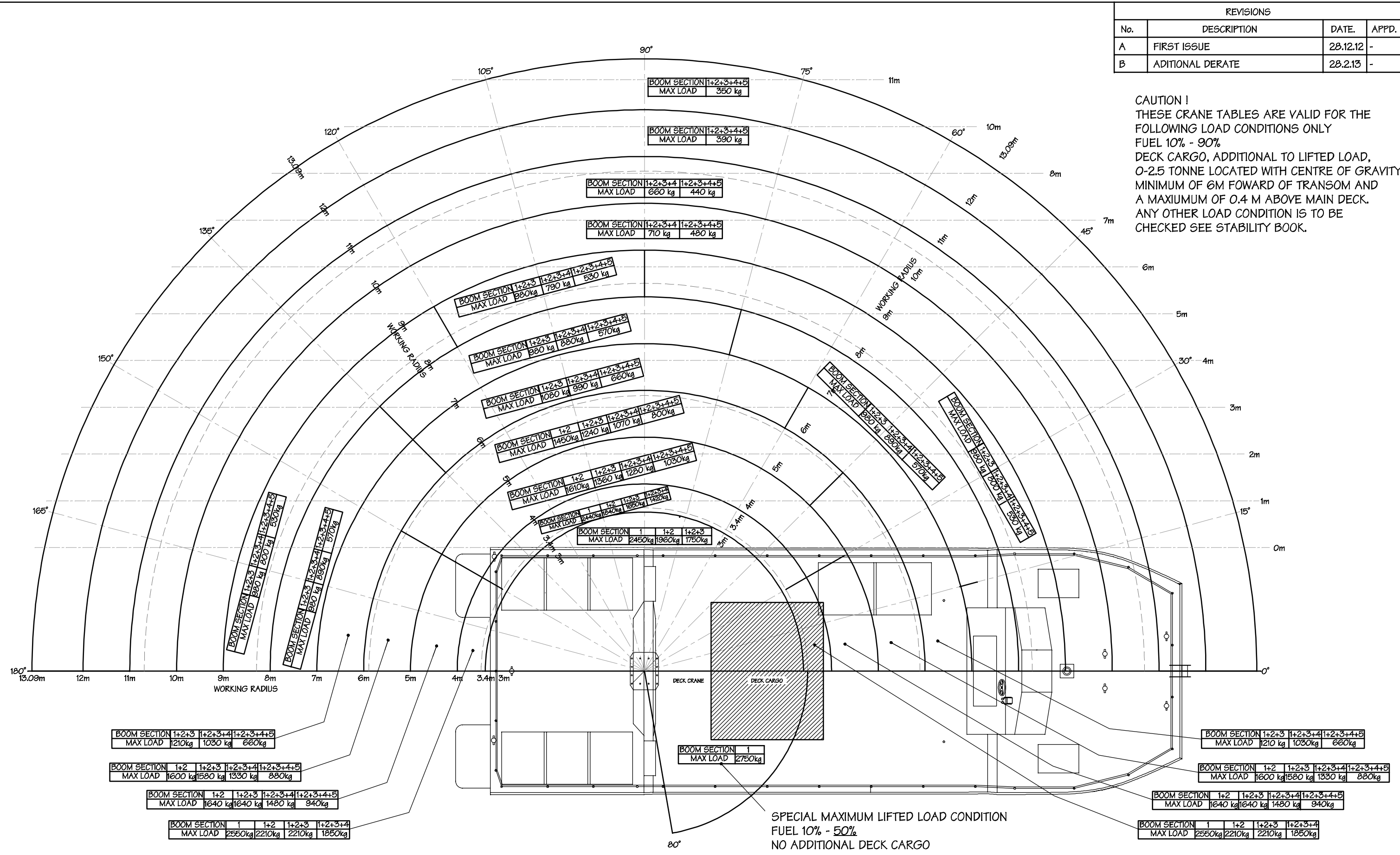
<b>MACHINERY:</b>		<b>MISC EQUIPMENT:</b>	
MAIN ENGINES	2 X YANMAR 280 HP	DECK CRANE	3 TONNE @ 3M
GENERATORS	1 X 15 KVA --- PORTABLE	DECK CRANE	380KILO @ 10M
		6 TONNE DRUM WINCH	OPTIONAL
		1 TONNE A FRAME	OPTIONAL
		AIR DIVING SPREAD	

<b>FUEL CONSUMPTION:</b>	
FULL OPERATING	20 KNOTS 120 LTS/HOUR
CRUISE SPEED	16 KNOTS 80 LTS/HOUR

<b>CAPACITIES:</b>	
FUEL	4500 LITRES
WATER	NIL
SEWERAGE	NIL

REVISIONS			
No.	DESCRIPTION	DATE	APPD.
A	FIRST ISSUE	28.12.12	-
B	ADDITIONAL DERATE	28.2.13	-

**CAUTION!**  
 THESE CRANE TABLES ARE VALID FOR THE FOLLOWING LOAD CONDITIONS ONLY  
 FUEL 10% - 90%  
 DECK CARGO, ADDITIONAL TO LIFTED LOAD, 0-2.5 TONNE LOCATED WITH CENTRE OF GRAVITY MINIMUM OF 6M FOWARD OF TRANSOM AND A MAXIMUM OF 0.4 M ABOVE MAIN DECK.  
 ANY OTHER LOAD CONDITION IS TO BE CHECKED SEE STABILITY BOOK.



BOOM SECTION 1+2+3	1+2+3+4	1+2+3+4+5
MAX LOAD 1210kg	1030kg	660kg

BOOM SECTION 1+2	1+2+3	1+2+3+4	1+2+3+4+5
MAX LOAD 1600kg	1580kg	1330kg	880kg

BOOM SECTION 1+2	1+2+3	1+2+3+4	1+2+3+4+5
MAX LOAD 1640kg	1640kg	1480kg	940kg

BOOM SECTION 1	1+2	1+2+3	1+2+3+4
MAX LOAD 2550kg	2210kg	2210kg	1850kg

BOOM SECTION 1+2+3+4+5
MAX LOAD 350kg

BOOM SECTION 1+2+3+4+5
MAX LOAD 390kg

BOOM SECTION 1+2+3+4	1+2+3+4+5
MAX LOAD 660kg	440kg

BOOM SECTION 1+2+3+4	1+2+3+4+5
MAX LOAD 710kg	480kg

BOOM SECTION 1+2+3	1+2+3+4	1+2+3+4+5
MAX LOAD 880kg	790kg	530kg

BOOM SECTION 1+2+3	1+2+3+4	1+2+3+4+5
MAX LOAD 880kg	880kg	570kg

BOOM SECTION 1+2+3	1+2+3+4	1+2+3+4+5
MAX LOAD 1080kg	930kg	660kg

BOOM SECTION 1+2	1+2+3	1+2+3+4	1+2+3+4+5
MAX LOAD 1450kg	1240kg	1070kg	800kg

BOOM SECTION 1+2	1+2+3	1+2+3+4	1+2+3+4+5
MAX LOAD 1610kg	1360kg	1280kg	1080kg

BOOM SECTION 1	1+2	1+2+3	1+2+3+4
MAX LOAD 2440kg	1840kg	1880kg	1480kg

BOOM SECTION 1	1+2	1+2+3
MAX LOAD 2450kg	1960kg	1750kg

BOOM SECTION 1+2+3	1+2+3+4	1+2+3+4+5
MAX LOAD 880kg	880kg	570kg

BOOM SECTION 1+2+3	1+2+3+4	1+2+3+4+5
MAX LOAD 880kg	880kg	570kg

BOOM SECTION 1
MAX LOAD 2750kg

BOOM SECTION 1+2+3	1+2+3+4	1+2+3+4+5
MAX LOAD 1210kg	1030kg	660kg

BOOM SECTION 1+2	1+2+3	1+2+3+4	1+2+3+4+5
MAX LOAD 1600kg	1580kg	1330kg	880kg

BOOM SECTION 1+2	1+2+3	1+2+3+4	1+2+3+4+5
MAX LOAD 1640kg	1640kg	1480kg	940kg

BOOM SECTION 1	1+2	1+2+3	1+2+3+4
MAX LOAD 2550kg	2210kg	2210kg	1850kg

SPECIAL MAXIMUM LIFTED LOAD CONDITION  
 FUEL 10% - 50%  
 NO ADDITIONAL DECK CARGO

Damien Smith Design 87 Toorak Rd Rivervale WA 6103 Ph (08) 9361 3365 <small>The intellectual property rights associated with this drawing are owned by Damien Smith Design Pty Ltd, including copyright of this drawing and the associated rights to the corresponding design. No copying, prototyping, or industrial application of this design is permitted without written permission.</small>	DRN	<b>D.P.S.</b>		<b>Damien Smith Design Pty Ltd</b>
	CKD.	JETWAVE WARROR		
	APPD.	CRANE LOAD CHART		REV.
	A3	DATE	DWG NO.	B
	28.2.13	082-CRNLOAD		
	Scale 1:75	Damien Smith Pty Ltd AQN 109 775 577 T/F Damien Smith Design Trust		